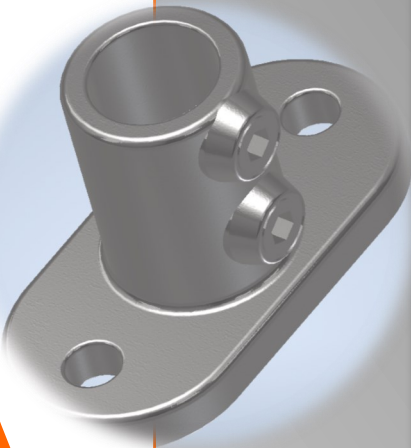




Tube Clamp Fittings



- The Modern Solutions
- The Modular Solutions
- The Mechanical Solutions



TUBE CLAMP/ KEY CLAMP

Standard tube clamp fittings has been developed over many years to enable the rapid construction of a wide variety of tubular structures, including handrails, guardrails, shopfitting displays and playground frames.

SOLUTION BENEFIT

- Quick to assemble with a simple hexagon key
- No welding required
- Long-lasting and durable
- Little or no maintenance required
- Suitable for all environments
- Cost-effective
- Consistent product casting quality
- Galvanised malleable iron pipe fittings

Our customers value

MODULAR SOLUTIONS– NO WELDING

Our components eliminate the need for specialist trades, hot works permits, fire spotters and welding protection to finished surfaces.

TECHNICAL SUPPORT

Our technical support offers: tube clamp 3D Drawing (STEP, SAT), trainings and help materials.

RECYCLING MATERIAL

Products made of recycled materials!

QUALITY

Our product factory have strict quality control .

PIPE DIMENSIONS:

- A--26,9 (3/4``)
- B-33,7 (1``)
- C-42,4 (1.1/4``)
- D-48,3 (1.1/2``)
- E-60,3 (2``)



Clamp type....

101



104



116



119



123



124



125



125H



126



127



128



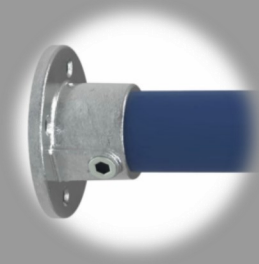
129



130



131



132



134



135



136



137



138



140



143



143W



144



145



Clamp type....

146



147



148



149



150



152



153



154



155



156



158



160



161



165



167



167M



168



168M



169



169M



170



171



173



173M



173F



Clamp type....

176



179



182



184



185



191



198



199



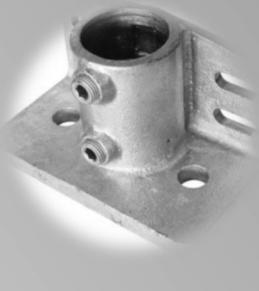
201



246



247



251



252Z



253Z



255Z



256Z



DDA-1



DDA-2



DDA-3



DDA-4



DDA-5



DDA-6



Available Sizes of Clamps

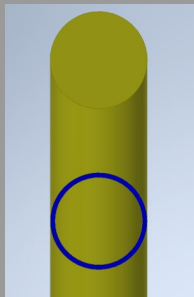
Clamp type	Tube size				
	A (D=26.9)	B (D=33.7)	C (D=42.4)	D (D=48.3)	E (D=60.3)
101	X	X	X	X	X
104	X	X	X	X	x
116	X	X	X	X	X
119	X	X	X	X	X
123			X	X	
124		X	X	X	
125	X	X	X	X	X
125H		X	X	X	
126			X	X	
127		X	X	X	
128	X	X	X	X	X
129	X	X	X	X	
130		X	X	X	
131	X	X	X	X	X
132	X	X	X	X	X
134		X	X	X	
135	X	X	X	X	X
136		X	X	X	
137		X	X	X	
138	X	X	X	X	
140	X	X	X	X	
143	X	X	X	X	
143W	X	X	X	X	
144		X	X	X	
145		X	X	X	
146		X	X	X	
147		X	X	X	
148	X	X	X	X	X
149	X	X	X	X	X
150	X	X	X	X	
152		X	X	X	
153		X	X	X	
154		X	X	X	
155		X	X	x	
156		X	X	X	
158	X	X	X	X	

Available Sizes of Clamps

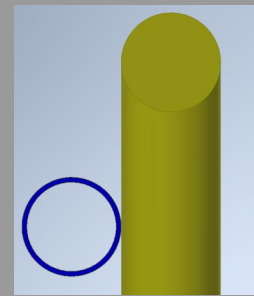
Clamp type	Tube size				
	A (D=26.9)	B (D=33.7)	C (D=42.4)	D (D=48.3)	E (D=60.3)
160	X	X	X	X	X
161	X	X	X	X	X
165	X	X	X	X	
167	X	X	X	X	
167M	X	X	X	X	X
168	X	X	X	X	
168M	X	X	X	X	X
169	X	X	X	X	X
169M	X	X	X	X	
170	X	X	X	X	X
171	X	X	X	X	X
173	X	X	X	X	X
173M	X	X	X	X	X
173F	X	X	X	X	X
176	X	X	X	X	X
179	X	X	X	X	
182	X	X	X	X	
184	X	X	X	X	X
185			X	X	
191			X	X	
198	X	X	X	X	
199	X	X	X	X	
201			X	X	
246			X	x	
247			X	x	
251				X	
252Z				X	
253Z				X	
255Z				X	
256Z				X	
DDA-1			X		
DDA-2			X		
DDA-3			X		
DDA-4			X		
DDA-5			X		
DDA-6			X		

Explanation

.../... horizontale pipes on the same axis/ different axis
 (pos:0,5,10,11,12,13,15,20,21,22,23,25,30,31,32,33ja 35)

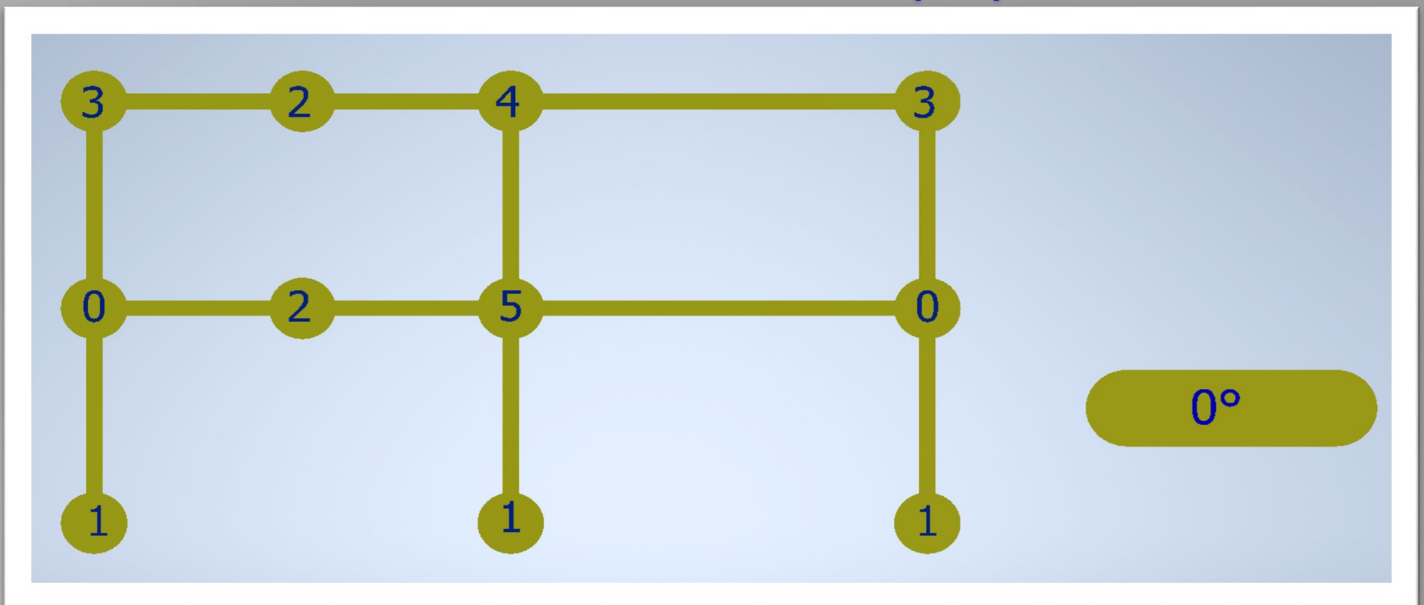


(SAME AXIS)



(DIFFERENT AXIS)

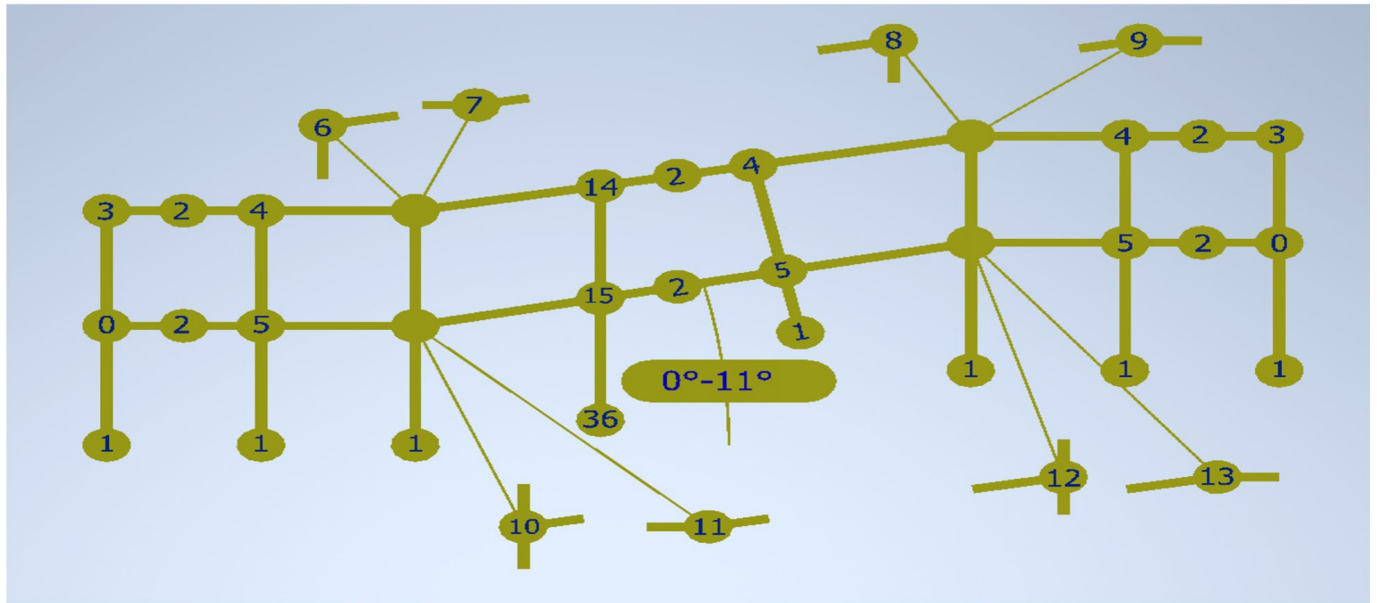
Horizontal handrail (0°)



Controll the compatibility of clamp types before ordeing.

Tube	Clamp type					
	Pos. 0	Pos. 1	Pos. 2	Pos. 3	Pos.4	Pos. 5
A (D=26.9)	101(173)/ 160,161	132	149, 150	125	101, 104,(135, 173)	119 /160, 161
B (D=33.7)	101,147 (136,173)/ 160, 161(137)	132, 134, 144, 145, 146	149, 150	125 , 125H (154)	101, 104, (135,136, 173)	119 (156) / 160,161 (137)
C (D=42.4)	101,147 (136,173)/ 160,161(137,201)	132, 134, 144, 145, 146 , 246, 247	149, 150	125 , 125H (154)	101, 104, (135,136, 173)	119 (156) / 160,161 (137, 201)
D (D=48.3)	101,147 (136,173)/ 160,161(137,201)	132, 134, 144, 145, 146 , 246, 247	149, 150	125 , 125H (154)	101, 104, (135,136, 173)	119 (156) / 160,161 (137, 201)
E (D=60.3)	101(173)/ 160,161	132	149, 150	125	101, 104,(135, 173)	119 /160, 161
(....) second choice			+ use multiple clamps			

Stair handrail (0° - 11°)



Control the compatibility of clamp types before ordering.

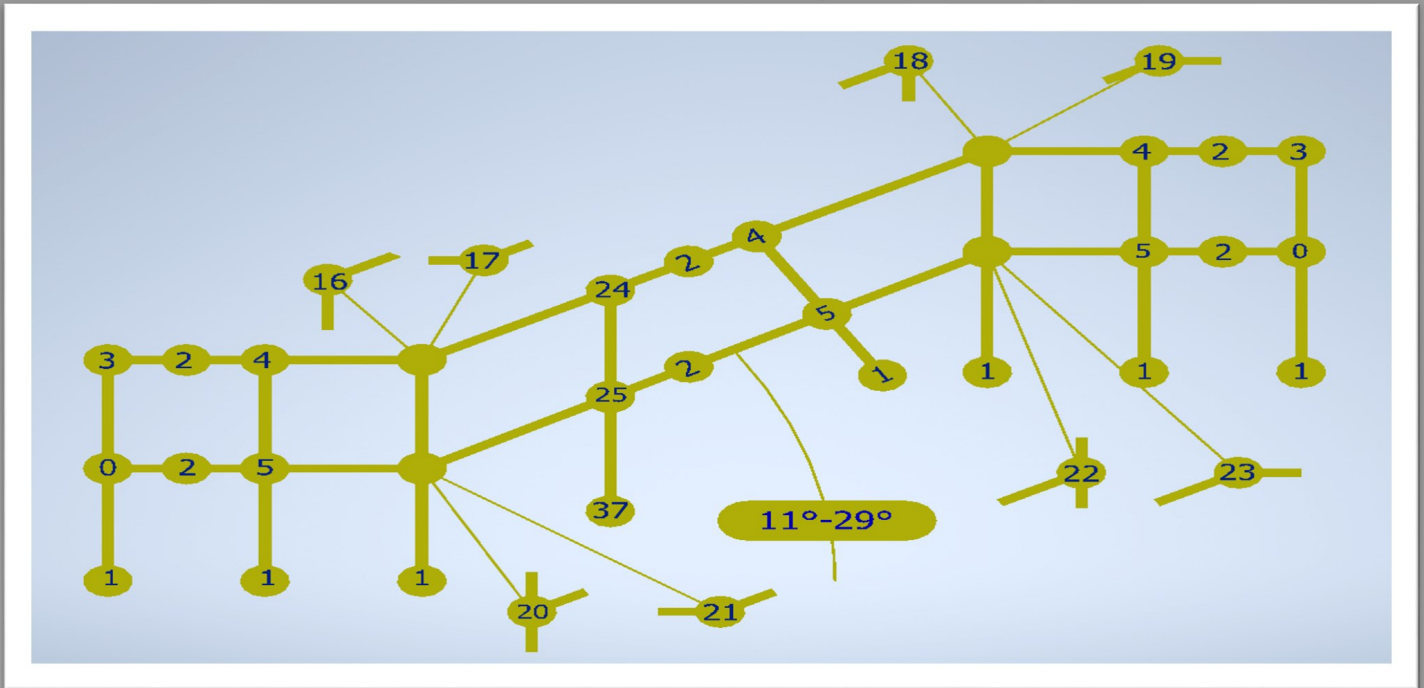
Tube size	Clamp type					
	Pos. 0	Pos. 1	Pos. 2	Pos. 3	Pos.4	Pos. 5
A (D=26.9)	101(173)/ 160,161	132	149, 150	125	101, 104,(135, 173)	119 /160, 161
B (D=33.7)	101,147(136,173)/ 160, 161(137)	132, 134, 144, 145, 146	149, 150	125 , 125H (154)	101, 104,(135,136, 173)	119 (156) / 160,161(137)
C (D=42.4)	101,147(136,173)/ 160,161(137,201)	132, 134, 144, 145, 146 , 246, 247	149, 150	125 , 125H (154)	101, 104,(135,136, 173)	119 (156) / 160,161(137, 201)
D (D=48.3)	101,147(136,173)/ 160,161(137,201)	132, 134, 144, 145, 146 , 246, 247	149, 150	125 , 125H (154)	101, 104,(135,136, 173)	119 (156) / 160,161(137, 201)
E (D=60.3)	101(173)/ 160,161	132	149, 150	125	101, 104,(135, 173)	119 /160, 161

Tube size	Clamp type										
	Pos. 6	Pos. 7	Pos. 8	Pos. 9	Pos.10	Pos. 11	Pos. 12	Pos. 13	Pos. 14	Pos. 15	Pos 36
A (D=26.9)	-	-	-	-	-	-	-	-	173	167	-
B (D=33.7)	154, 125H	125H	-	125H	153 / 161+147	125H	153 / 161+147	125H	153, 155 (173)	156 (167)/161 +147	152
C (D=42.4)	154, 125H	125H	-	125H	153 / 161+147	125H	153 / 161+147	125H	153, 155 (173)	156 (167)/ 161+147	152
D (D=48.3)	154, 125H	125H	-	125H	153 / 161+147	125H	153 / 161+147	125H	153, 155 (173)	156 (167)/ 161+147	152
E (D=60.3)	-	-	-	-	-	-	-	-	173	-	-

(...) second choice

+ use multiple clamps

Stair handrail (11° - 29°)



Controll the compatibility of clamp types before ordeing.

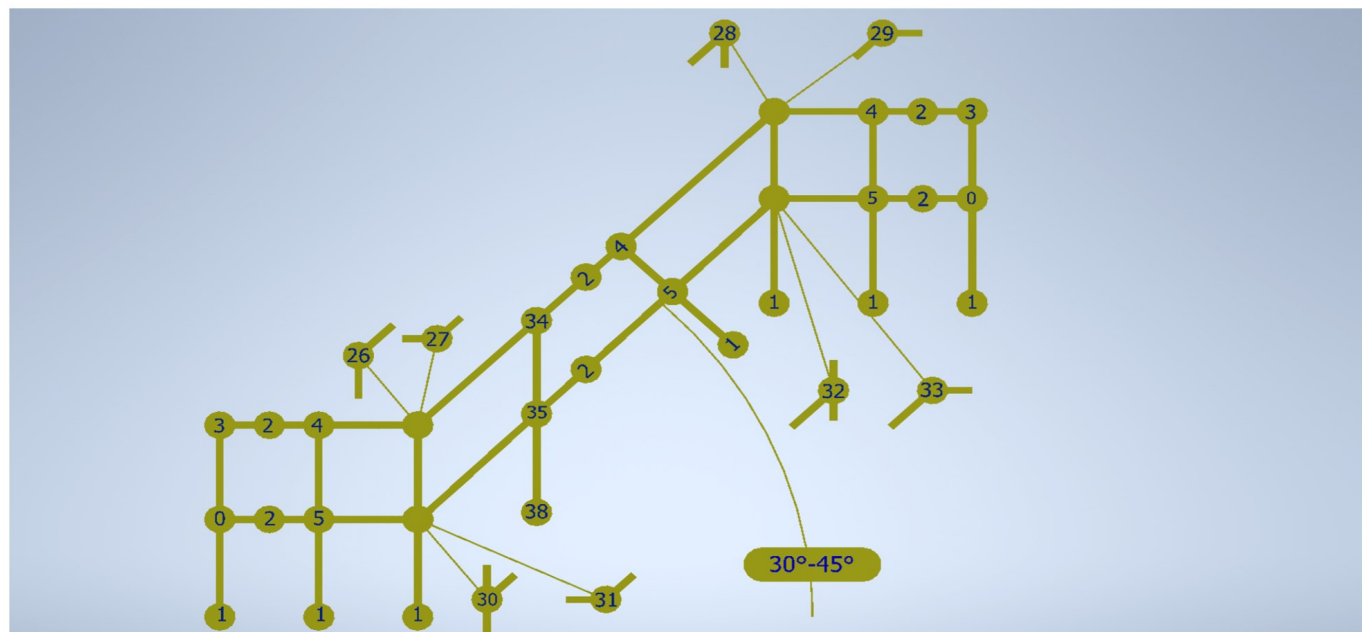
Tube	Clamp type					
	size	Pos. 0	Pos. 1	Pos. 2	Pos. 3	Pos.4
A (D=26.9)	101(173)/ 160,161	132	149, 150	125	101, 104,(135, 173)	119 /160, 161
B (D=33.7)	101,147(136,173)/ 160, 161(137)	132, 134, 144, 145, 146	149, 150	125 , 125H (154)	101, 104,(135,136, 173)	119 (156) / 160,161(137)
C (D=42.4)	101,147(136,173)/ 160,161(137,201)	132, 134, 144, 145, 146 , 246, 247	149, 150	125 , 125H (154)	101, 104,(135,136, 173)	119 (156) / 160,161(137, 201)
D (D=48.3)	101,147(136,173)/ 160,161(137,201)	132, 134, 144, 145, 146 , 246, 247	149, 150	125 , 125H (154)	101, 104,(135,136, 173)	119 (156) / 160,161(137, 201)
E (D=60.3)	101(173)/ 160,161	132	149, 150	125	101, 104,(135, 173)	119 /160, 161

Tube	Clamp type											
	size	Pos. 16	Pos. 17	Pos. 18	Pos. 19	Pos.20	Pos. 21	Pos. 22	Pos. 23	Pos. 24	Pos. 25	Pos. 37
A (D=26.9)	-	-	-	-	-	-	-	-	-	-	-	-
B (D=33.7)	124*, 125H	125H	-	124*, 125H	-/161+147	125H	/161+147	125H	-	/161+147	-	-
C (D=42.4)	124*, 125H	125H	123(20° - 50°)	124*, 125H	-/161+147	125H	/161+147	125H	-	/161+147	-	-
D (D=48.3)	124*, 125H	125H	123(20° - 50°)	124*, 125H	253Z / 161+147	125H	253Z / 161+147	125H	253Z, 255Z	256Z / 161+147	252Z	-
E (D=60.3)	-	-	-	-	-	-	-	-	-	-	-	-

(...) second choice

+ use multiple clamps

Stair handrail (30° - 45°)



Control the compatibility of clamp types before ordering.

Tube	Clamp type					
	Pos. 0	Pos. 1	Pos. 2	Pos. 3	Pos.4	Pos. 5
A (D=26.9)	101(173)/ 160,161	132	149, 150	125	101, 104,(135, 173)	119 /160, 161
B (D=33.7)	101,147(136,173)/ 160, 161(137)	132, 134, 144, 145, 146	149, 150	125 , 125H (154)	101, 104, (135,136, 173)	119 (156) / 160,161 (137)
C (D=42.4)	101,147(136,173)/ 160,161(137,201)	132, 134, 144, 145, 146 , 246, 247	149, 150	125 , 125H (154)	101, 104, (135,136, 173)	119 (156) / 160,161 (137, 201)
D (D=48.3)	101,147(136,173)/ 160,161(137,201)	132, 134, 144, 145, 146 , 246, 247	149, 150	125 , 125H (154)	101, 104, (135,136, 173)	119 (156) / 160,161 (137, 201)
E (D=60.3)	101(173)/ 160,161	132	149, 150	125	101, 104,(135, 173)	119 /160, 161

Tube	Clamp type										
	Pos. 26	Pos. 27	Pos. 28	Pos. 29	Pos.30	Pos. 31	Pos. 32	Pos. 33	Pos. 34	Pos. 35	Pos.38
A (D=26.9)	-	-	-	-	129	-	129	-	129	-	-
B (D=33.7)	124, 125H	125H	-	124, 125H	129/ 161+147	125H	129 /161+147	125H	127,129	130 /161 +147	-
C (D=42.4)	124, 125H	125H	123	124, 125H	129 / 161+147	125H	129 /161+147	125H	127,129	126, 130/ 161+147	-
D (D=48.3)	124, 125H	125H	123	124, 125H	129 / 161+147	125H	129 / 161+147	125H	127,129	126, 130/ 161+147	251
E (D=60.3)	-	-	-	-	-	-	-	-	-	-	-

(...) second choice

+ use multiple clamps

(weatherproof)

(factories)

OUR CLAMPS

(on the way to the customer)



(information boards)

(playgrounds)

(roads)



MEngLine OÜ

Phone: +372 5694 9313
E-mail: info@mengline.com
WWW.MENGLINE.COM